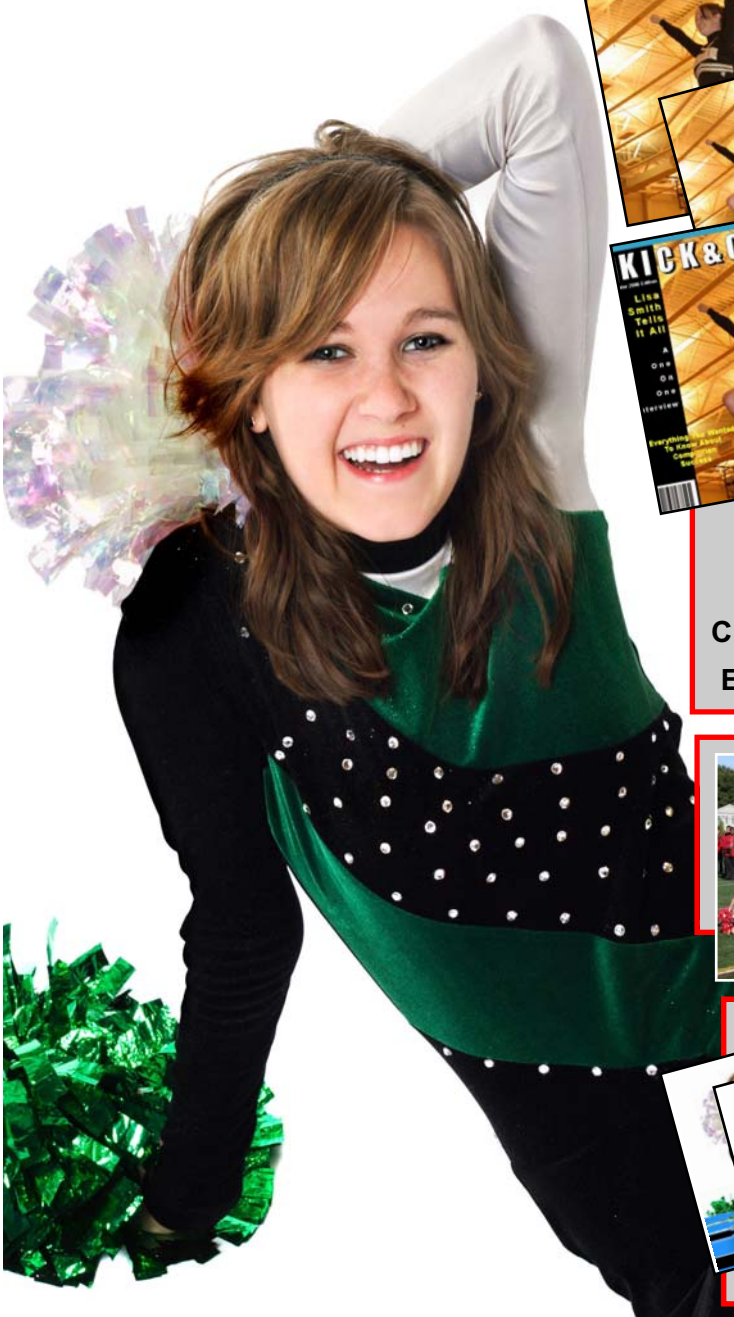


LIKA

LONG ISLAND KICKLINE ASSOCIATION INC.
www.li-kickline.org

PHOTOS ONLINE



8 X 10 Action Shot **\$19.99**

5 X 7 Action Shot **\$14.99**

Magazine Cover **\$29.99**

8 X 10 Cover with Headlines,
Looks Like A Real Magazine

2 & 3 Pose
Composites
Colorful Composite with
Event, Name and Year.



\$29.00

\$39.00



8X10 Team Photo
With Event Name, Team
and Year.

\$29.99



Sport Magnets
3X3 Sport Magnets
With Event, Name, Team
and Year.

\$16.99

DVD VIDEO



Professionally designed and videographed DVD with your
teams performance only.

Enjoy the event and let us do the work.

DVD is of Hi-Res digital quality. Each DVD includes a action
slide show of still photos from the performance and a video
shot wide angle. DVD's are profesionally authored with
interactive menus. Inquire about special coach
discounts and entire competition DVD.

\$39.00

EASY TO ORDER ONLINE

Go to... www.pixelsimaging.com, Click On "View Your Event Photos Here"
Click On "LIKA"

Password: lika09

Click On **Your Competition Class**

Scroll down for your School Slate. Then browse through your teams photos .

Call us at: 631-878-1848



LONG ISLAND KICKLINE ASSOCIATION INC.
www.li-kickline.org

COMMACK MIDDLE SCHOOL
PRESENTS
THE COMPETITION
of
SUNDAY, DECEMBER 13, 2009

Performance Schedule

AM SESSION

DOORS OPEN AT 8:45 AM, STARTING TIME - 9:15 AM

CLASS 1 - KICKLINE FOR MIDDLE SCHOOLS:

- (1) ELWOOD
- (2) LYNBROOK
- (3) ROBERT FROST

CLASS 2 - KICKLINE FOR HIGH SCHOOLS JV

- (4) BETHPAGE
- (5) WALT WHITMAN

CLASS 5 - DANCE FOR MIDDLE SCHOOLS

- (6) NORTHPORT
- (7) WEST HOLLOW

CLASS 8 - POM FOR MIDDLE SCHOOL

- (8) ROBERT FROST
- (9) LYNBROOK
- (10) NORTHPORT

CLASS 9 - POM FOR HIGH SCHOOLS JV

- (11) BETHPAGE
- (12) WALT WHITMAN

PM SESSION

DOORS OPEN AT 12:15 PM, STARTING TIME - 12:45 PM

CLASS 3 - KICKLINE FOR HIGH SCHOOLS WITH 12 -16

MEMBERS:

- (1) BETHPAGE
- (2) CONNETQUOT
- (3) DEER PARK
- (4) EAST ISLIP
- (5) HALF HOLLOW HILLS EAST

CLASS 4 - KICKLINE FOR HIGH SCHOOLS WITH 17 -36

MEMBERS:

- (6) JOHN GLENN
- (7) GARDEN CITY
- (8) SYOSSET

CLASS 7 - DANCE FOR HIGH SCHOOLS

- (9) PLAINEDGE
- (10) HALF HOLLOW HILLS WEST
- (11) JOHN GLENN

CLASS 10 - POM FOR HIGH SCHOOLS WITH 12 - 18

MEMBERS:

- (12) HALF HOLLOW HILLS EAST
- (13) PLAINEDGE

CLASS 11 - POM FOR HIGH SCHOOLS WITH 19 - 36

MEMBERS:

- (14) BETHPAGE
- (15) JOHN GLENN
- (16) HALF HOLLOW HILLS WEST

CLASS 13 - HIP HOP FOR HIGH SCHOOLS

- (17) SYOSSET
- (18) HALF HOLLOW HILLS EAST
- (19) LINDENHURST
- (20) BETHPAGE
- (21) HALF HOLLOW HILLS WEST