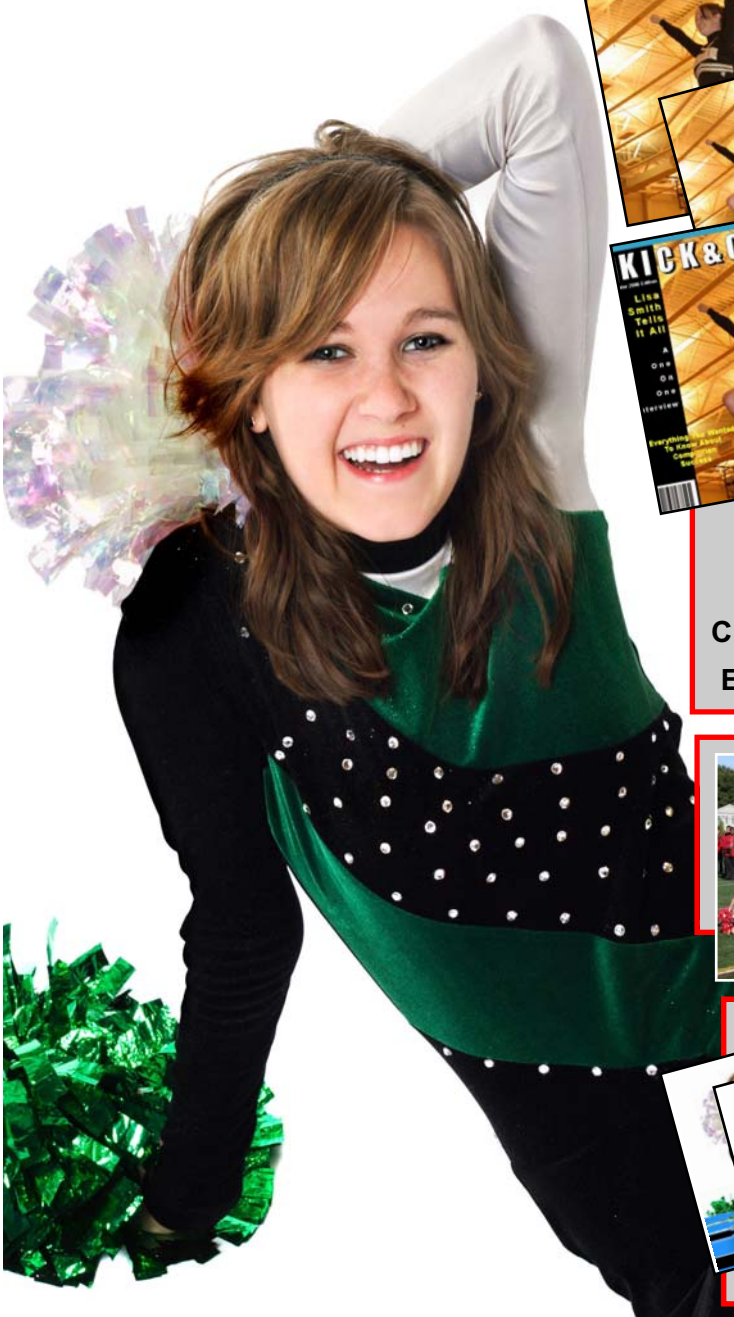


LIKA

LONG ISLAND KICKLINE ASSOCIATION INC.
www.li-kickline.org

PHOTOS ONLINE



8 X 10 Action Shot **\$19.99**

5 X 7 Action Shot **\$14.99**

Magazine Cover **\$29.99**

8 X 10 Cover with Headlines,
Looks Like A Real Magazine

2 & 3 Pose
Composites
Colorful Composite with
Event, Name and Year.



\$29.00

\$39.00



8X10 Team Photo
With Event Name, Team
and Year.

\$29.99



Sport Magnets
2X3 Sport Magnets
With Event, Name, Team
and Year.

\$16.99

DVD VIDEO



Professionally designed and videographed DVD with your
teams performance only.

Enjoy the event and let us do the work.

DVD is of Hi-Res digital quality. Each DVD includes a action
slide show of still photos from the performance and a video
shot wide angle. DVD's are profesionally authored with
interactive menus. Inquire about special coach
discounts and entire competition DVD.

\$39.00

EASY TO ORDER ONLINE

Go to... www.pixelsimaging.com, Click On "View Your Event Photos Here"
Click On "LIKA"

Password: lika09

Click On **Your Competition Class**

Scroll down for your School Slate. Then browse through your teams photos .

Call us at: 631-878-1848



LONG ISLAND KICKLINE ASSOCIATION INC.
www.li-kickline.org

COMMACK MIDDLE SCHOOL
PRESENTS
THE COMPETITION
of
SUNDAY, JANUARY 24TH, 2010

Performance Schedule

AM SESSION

DOORS OPEN AT 8:45 AM, STARTING TIME - 9:15 AM

CLASS 1 - KICKLINE FOR MIDDLE SCHOOLS:

- (1) OAKDALE-BOHEMIA
- (2) COMMACK
- (3) ELWOOD
- (4) ROBERT FROST

CLASS 2 - KICKLINE FOR HIGH SCHOOLS JV

- (5) COMMACK
- (6) BETHPAGE
- (7) WALT WHITMAN
- (8) LYNBROOK

CLASS 5 - DANCE FOR MIDDLE SCHOOLS

- (9) CANDLEWOOD
- (10) NORTHPORT
- (11) WEST HOLLOW
- (12) EAST NORTHPORT
- (13) COMMACK

CLASS 8 - POM FOR MIDDLE SCHOOL

- (14) EAST ISLIP
- (15) ROBERT FROST
- (16) CANDLEWOOD
- (17) ELWOOD
- (18) WEST HOLLOW
- (19) NORTHPORT

CLASS 9 - POM FOR HIGH SCHOOLS JV

- (20) COMMACK
- (21) LYNBROOK
- (22) BETHPAGE
- (23) WALT WHITMAN

PM SESSION

DOORS OPEN AT 12:15 PM, STARTING TIME - 12:45 PM

CLASS 3 - KICKLINE FOR HIGH SCHOOLS WITH 12 -16

MEMBERS:

- (1) DEER PARK
- (2) HALF HOLLOW HILLS EAST
- (3) WALT WHITMAN
- (4) EAST ISLIP
- (5) MacARTHUR
- (6) CONNETQUOT
- (7) BETHPAGE

CLASS 4 - KICKLINE FOR HIGH SCHOOLS WITH 17-36

MEMBERS:

- (8) GARDEN CITY
- (9) COMMACK
- (10) JOHN GLENN
- (11) LYNBROOK
- (12) FLORAL PARK
- (13) ISLAND TREES

CLASS 7 - DANCE FOR HIGH SCHOOLS

- (14) PLAINEDGE
- (15) ST. FRANCIS PREP
- (16) COMMACK
- (17) JOHN GLENN
- (18) HALF HOLLOW HILLS WEST

CLASS 10 - POM FOR HIGH SCHOOLS WITH 12 - 18

MEMBERS:

- (19) MacARTHUR
- (20) CENTEREACH
- (21) EAST ISLIP
- (22) HALF HOLLOW HILLS EAST
- (23) PLAINEDGE
- (24) EAST ISLIP
- (25) WALT WHITMAN

CLASS 11 - POM FOR HIGH SCHOOLS WITH 19 - 36

MEMBERS:

- (26) COMMACK
- (27) JOHN GLENN
- (28) ISLAND TREES
- (29) LYNBROOK
- (30) BETHPAGE
- (31) DEER PARK

CLASS 13 - HIP HOP FOR HIGH SCHOOLS

- (32) HALF HOLLOW HILLS WEST
- (33) WALT WHITMAN
- (34) COMMACK
- (35) HALF HOLLOW HILLS EAST
- (36) ISLAND TREES
- (37) LINDENHURST
- (38) BETHPAGE
- (39) LYNBROOK